

ALBERT Keramik

Design: Giorgio Cattelan



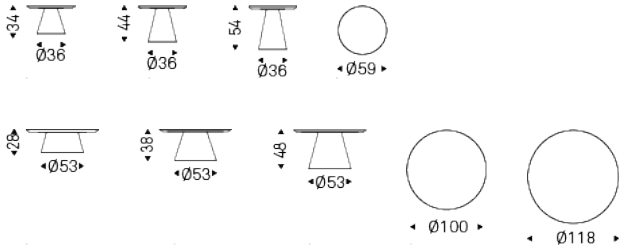
Product description

Coffee table with base in titanium (GFM11) or bronze (GFM18) embossed lacquered steel. Top in ceramic Marmi matt Golden Calacatta (KM05), glossy Golden Calacatta (KM06), matt Portoro (KM07), glossy Portoro (KM08), Breccia (KM12), Corcovado (KM14), Kaindy (KM16), matt Borghini Calacatta (KM18) or glossy Borghini Calacatta (KM19).

ALBERT Keramik

Design: Giorgio Cattelan

Dimension

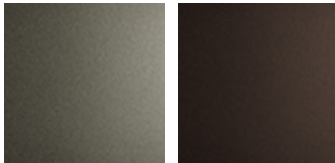


ALBERT Keramik

Design: Giorgio Cattelan

Finishes: base

metal

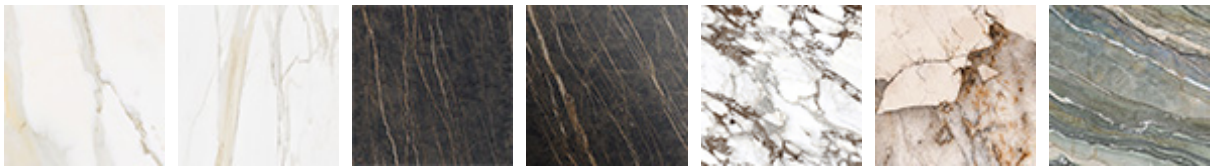


GFM11 titanium
embossed

GFM18 bronze
embossed

Finishes: top

Marmi ceramic



KM05 matt
Golden Calacatta

KM06 glossy
Golden Calacatta

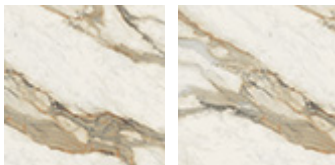
KM07 matt
Portoro

KM08 glossy
Portoro

KM12 Breccia

KM14 Corcovado

KM16 Kaindy



KM18 matt
Borghini
Calacatta

KM19 glossy
Borghini
Calacatta